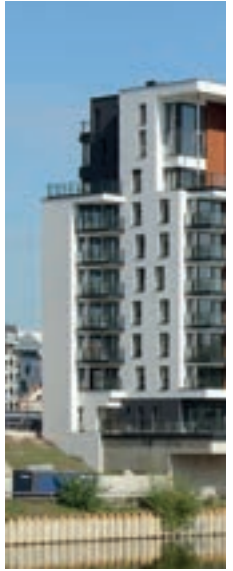




Rawlplug  
USA Offer

**RAWLPLUG®**





# From London to Mars in 100 years

- |      |   |
|------|---|
| 1919 | beginning of the Rawlplug brand                                 |
| 1930 | 1 <sup>st</sup> Mechanical Anchor                               |
| 1948 | 1 <sup>st</sup> Metal Drywall Anchor                            |
| 1998 | 1 <sup>st</sup> British company to obtain the ETA certification |
| 2012 | Rawlplug on the planet MARS (Curiosity Rover)                   |
| 2019 | Rawlplug's 100 <sup>th</sup> anniversary                        |







**100** years 1919-2019 **RAWLPLUG®**

## Everywhere in the world

Rawlplug is the global brand of first choice. In the everyday pursuit of Rawlplug's vision, we keep the promise expressed in our mission, as we support our customers with state-of-the-art products they can trust without reservations. Having chosen them, you receive a guarantee that buildings and facilities visited daily by thousands of people not only look great, but are absolutely safe to use. We can proudly claim that, over the last 100 years, Rawlplug has become an unsung hero of numerous investment projects completed all over the world.

100 YEARS OF EXPERTISE IN FIXINGS, FASTENERS AND TOOLS





## Timeless inventions

The world's first wall plug was a prelude to Rawlplug's further patents which revolutionised the construction industry:

### 1919 Rawlplug

The world's first wall plug

### 1926 Rawlhammer

The world's first patented hammer drill

### 1934 Rawlbolt

The world's first mechanical anchor

### 1941 Rawlnut

The world's first shock- and corrosion-resistant fixing

### Spring Toggle

The world's first fixing solution dedicated to drywall applications

### 1948 Rawlanchor

Drywall fixing solution which revolutionised the market

**100** years  
1919-2019  
**RAWLPLUG®**

## Heritage

John Joseph Rawlings

– entrepreneur, visionary, inventor.

The world's first wall plug he had patented, triggered a true revolution in the construction industry and went down in history for good. At the same time, this invention marked the beginning of a completely new history – a history of the brand whose contemporary strength draws abundantly from the legacy of the past, the achievements of the present and the vision of the future. – A brand which not only astonished the general public over decades with innovative solutions and products dedicated to professionals, but also with its panache and scale of operations, extraordinary ideas that revolutionised the marketing of its era, and its comprehensive approach to customers' needs and expectations, in which it has never ceased to be a role model. We are deeply convinced that the true Renaissance man of the construction sector, whom John Joseph Rawlings definitely was, would be proud of us. He would surely commend us on building the brand's strength on the grounds which combine the past heritage, the achievements of the present and the vision of the future.





## Revolution in marketing

It's truly extraordinary that whatever the effort undertaken by the Rawlplug brand, it stepped far beyond the standards of their day and age. Take the publicity campaign following their breakthrough invention of the world's first wall plug. It was then that the brand spent thousands of pounds for press advertising, only to change the potential users' mindset vis-à-vis the actual fixing capabilities of their times. Acting with impressive panache and on a massive scale, the brand made a commercial sensation, all the more since never before had any construction company been advertised on Daily Mail's front page!

## Travelling Rawlplug

What proved unquestionably supportive of the brand's global expansion was the mobile display installation known as Rawlplug Travelling Showroom. It marked yet another revolution in marketing. These vehicles took long trips lasting several months on all continents, from Sweden to Australia, and made a sensation in each market where they appeared. Never before had the potential customers encountered such a direct form of commodity promotion combined with the opportunity to use the products in practice. In a tailored van, customers could become familiar with the full portfolio of fixings as well as product datasheets, use individual items on site, therefore learning about their applications and installation methods, as well as speak to the brand's experts, hoping for some individual consultations.



## Service that begins on drawing boards

Rawlplug has always understood and recognised the role and importance of architects, designers and engineers. Already in the 1940s, free-of-charge technical advisory and support service were promoted by the industry's press as a means to solve any kinds of fixing related issues. "A service that begins on a drawing board." Isn't it stunning that such a comprehensive approach to customer service is one of the foundations of our legacy? Heritage which allows us to respond to the needs of the present while curiously awaiting the future.



## Conquest of the world

The initial 20 years of Rawlplug's operations were marked with global expansion. To be present in "every civilised country in the world" was John Joseph Rawlings's vision which he consistently pursued over the successive years. At the turn of the 1940s, the brand was present on all continents, completing the conquest of the United States and aiming at Australia. By that time, Rawlplug's products had already been manufactured in 10 countries, including London, New York, Paris or Zurich.





# Rawlplug Offer Catalogue



## Rawlplug Offer

Heritage. Product. Services. Training

## Lightweight fixings

Strength, versatility and simplicity of installation in all substrates and with any fixture.

## Power tool accessories

Comprehensive and complementary portfolio of accessories for top-quality fixing solutions.

## POS Essential Offer

Unique and exclusive exposition

6

8

19

31



### LIGHTWEIGHT FIXINGS

PLASTERBOARD FIXINGS	<b>UNO®</b> The UK's No. 1 Multi-use anchor <b>TIMBER UNO®</b> the world's first anchor made of 70% wood	■	8
	<b>RAWLDRIVE-D</b> Nylon self-drilling anchor for single & double drywall	■	14
	<b>RAWLDRIVE-M</b> Metal self-drilling anchor for single drywall	■	15
	<b>RAWLTOGGLE</b> original since 1934 Spring toggle	■	16
	<b>RAWLANCHOR</b> Wall anchor	■	17
	<b>TAP-IT</b> Hammer-in anchor for plasterboard	■	18



### POWER TOOL ACCESSORIES

<b>RTA-SDSA</b> Drill bits Aggressor SDS plus	■	19
<b>RT0-BIT</b> Screwdriver bits	■	20
<b>RT0-BIT-SET1</b> Screwdriver bits set	■	21

### POS OFFER

POS OFFER	<b>Rawlplug's colour code</b>	32
	<b>POS</b> Exploded view and information elements	34
	<b>POS dedicated</b> to Rawlplug USA	36
	<b>Shop-in shop</b>	38



Color coding

solid walls   plasterboard   universal   timber   metal







Lightweight  
F I X I N G S

[www.rawlplug.com](http://www.rawlplug.com)



# > UNIVERSAL, RELIABLE, ECO-FRIENDLY



**Increased load capacity**  
thanks to adding wood  
to the anchor material



Flange  
**preventing the  
anchor from  
slipping** inside  
the hole



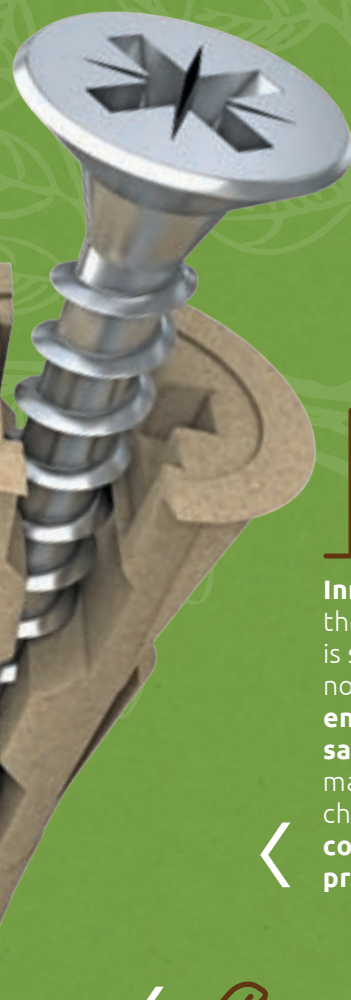
Unique anchor design  
which **initiates the  
expansion at the  
hole inlet** in the  
substrate, instead of  
at the hole bottom



Exceptional geometry  
ensuring maximised  
expansion and **substrate  
adhesion**, making the  
Timber UNO a safe  
solution for all substrates  
and all applications



**Anti-rotation fins** preventing  
the sleeve from turning inside  
the hole during installation,  
which makes the anchor  
exceptionally efficient in irregular  
and unstable holes



**Innovative mixture**  
the Timber UNO  
is second to  
none in terms of  
**environmental  
safety**. This quality  
makes it a perfect  
choice for **green  
construction  
projects**



Two **symmetrically  
split halves of the  
anchor** combined  
with two-directional  
expansion-based  
operation make it  
possible to achieve **high  
expansion force**

# ECO



# UNO®

THE UK'S NO. 1 MULTI-USE ANCHOR  
THE WORLD'S FIRST ANCHOR MADE OF 70% WOOD

Truly universal anchor which fixes into any base material, solid or hollow

## FEATURES AND BENEFITS

Unique anchor design which initiates the expansion at the hole inlet in the substrate, instead of at the hole bottom

Reduced anchor length for fixing in thin-walled substrates

Two symmetrically split halves of the anchor combined with two-directional expansion-based operation make it possible to achieve high expansion force

Exceptional geometry ensuring maximised expansion and substrate adhesion, making the UNO® a safe solution for all substrates and all applications

Flange preventing the anchor from slipping inside the hole

Anti-rotation fins preventing the sleeve from turning inside the hole during installation, which makes the plug exceptionally efficient in irregular and unstable holes

## BASE MATERIALS



OSB



Reinforced concrete



Non-reinforced concrete



Solid brick



Perforated brick



Solid calcium silicate brick



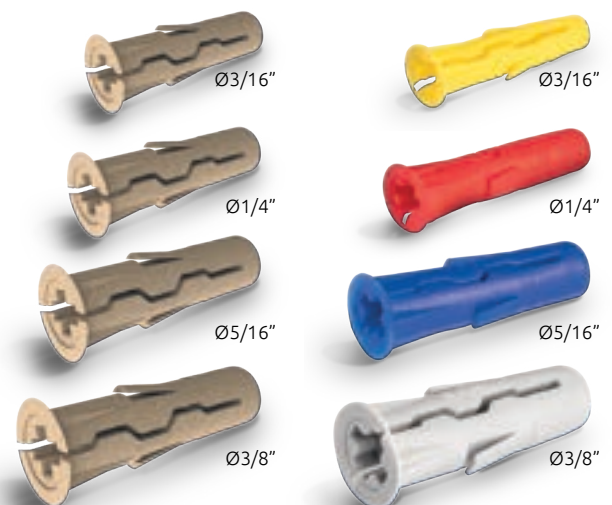
Hollow calcium silicate brick



Aerated concrete



Plasterboard







movie

UNIVERSAL ANCHOR LIKE NO OTHER. Choose reliability – choose the UNO® anchor and benefit from its unique design, which ensures an invariably reliable fixing, even in unknown and heavily exploited substrates.

## APPLICATIONS

Suspended ceilings

Electrical fittings

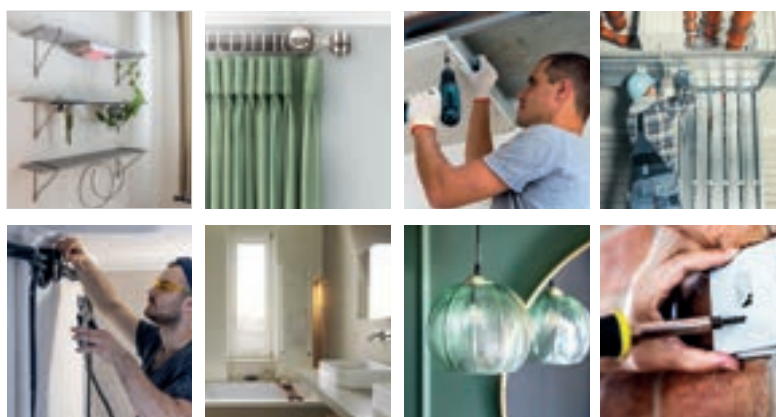
Cable trays

Boilers

Radiators

Lighting

Bathroom fittings



## INSTALLATION GUIDE



1. Drill a hole of required diameter.
2. Insert UNO plug into hole and tap home.
3. Insert screw of required diameter into plug through fixture and tighten.





OFFER

timber UNO®



## TIMBER UNO CLIP



Clip-strip packaging **made in as much as 70% of wood**. To clearly showcase our attention to the customer's convenience, **the screw diameters recommended for each plug diameter** are marked in a visible place on the packaging, along with **the diameter of the drill bit** to be used before the product can be installed. Besides the hanging option, the TIMBER UNO CLIP can also be presented in collective packaging, either on shelves or next to cash desks, which provides for the display itself.

Rawlplug code	Quantity on Clip	Packaging type	Packaging size	Product	Quantity [pcs]	
			inch	inch	Quantity per Inner Pack	Quantity per CASE
R-U0-3/16-96-TB	96	clip	85x205x18	3x7x1"	16	128
R-U0-1/4-96-TB	96	clip	80x220x30	3x8x1"	10	80


BIO BAG  
100%  
DEGRADABLE

## 100% BIODEGRADABLE B-PACK

The BIO B-PACK bags represent a unique type of Rawlplug packaging:

- their **transparency** makes it possible to become perfectly familiar with the contents, while the design allows for both **hanging and standing display arrangement**;
- the B-PACK bags can be disposed into a biodegradable waste bin or a compost bin;
- the raw materials used in production of our **biodegradable containers** are corn, potatoes and wood;
- our BIO packaging consists of paper, transparent cellulose foil, metallised foil, cellulose foil, and starch, depending on the structure.

Rawlplug code	Quantity in pack	Packaging type	Packaging size	Product	Screw	Quantity [pcs]	
			inch	inch	inch	Quantity per Inner Pack	Quantity per CASE
R-BIO-UNOT3/16-1	80	BIO BAG	4x7x3"	3/16"		12	96
R-BIO-UNOT3/16+6-1	40	BIO BAG	4x7x3"	3/16"	#6x1-1/2	12	96
R-BIO-UNOT1/4-1	60	BIO BAG	4x7x3"	1/4"		12	96
R-BIO-UNOT1/4+8-1	30	BIO BAG	4x7x3"	1/4"	#8x1-3/4	12	96
R-BIO-UNOT5/16-1	34	BIO BAG	4x7x3"	5/16"		12	96
R-BIO-UNOT5/16+9-1	20	BIO BAG	4x7x3"	5/16"	#9x1-3/4	12	96
R-BIO-UNOT3/8-1	24	BIO BAG	4x7x3"	3/8"		12	96
R-BIO-UNOT3/8+10-1	14	BIO BAG	4x7x3"	3/8"	#10x1-3/4	12	96



Rawlplug code	Anchor	Screw	Quantity	
	Size	Size	Box	Case
	inch	inch	pcs	pcs
R-X0-UNO3/16+6-1	3/16"	#6x1-1/2	100	1600
R-X0-UNO1/4+7-1	1/4"	#7x1-1/2	100	1600
R-X0-UNO5/16+8-1	5/16"	#7x1-1/2	100	800
R-X0-UNO3/8+10-1	3/8"	#10x1-3/4	100	800



Rawlplug code	Quantity per CLIP	Packaging type	Packaging size	Product	Quantity [pcs]	
			inch	inch	Inner Pack	Case
R-U0-3/16-96	96	clip	3x7x1"	3/16"	16	128
R-U0-1/4-96	96	clip	3x8x1"	1/4"	10	80



## OFFER




Rawlplug code	Quantity per WRAP	Packaging type	Packaging size	Product	Quantity [pcs]	
			inch	inch	Inner Pack	Case
R-U0-MIX-1/4-288-2	288	wrap	3x3x6"	1/4"	4	32
R-U0-MIX1/4-288D-2	288	wrap	3x3x6"	1/4"	4	32

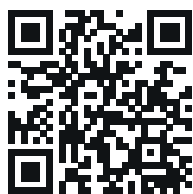


Rawlplug code	Quantity in pack	Anchor	Screw	Quantity [pcs]	
		Size [inch]	Size [inch]	Inner Pack	Case
R-S0-UNO1/4+6-1	8	1/4"	#6x1-1/2	10	80
R-S0-UNO1/4+7-1	8	1/4"	#8x1-3/4	10	80
R-S0-UNO1/4+7-2	36	1/4"	#8x1-3/4	6	72
R-S0-UNO3/16+6-1	12	3/16"	#6x1-1/2	10	80
R-S0-UNO3/16+6-2	24	3/16"	#6x1-1/2	8	96
R-S0-UNO3/16+6-3	40	3/16"	#6x1-1/2	4	48
R-S0-UNO5/16+8-1	8	5/16"	#9x1-3/4	8	96
R-S0-UNO5/16+8-2	20	5/16"	#9x1-3/4	6	72
R-S0-UNO5/16+8-3	50	5/16"	#9x1-3/4	4	24
R-S0-UNO3/8+10-1	15	3/8"	#10x1-3/4	5	60

## RELATED PRODUCTS

DRILLING	Drill bits Aggressor SDS plus <b>RT0-IBT-PZ2X3</b>	Drill bits Aggressor SDS plus <b>RTA-SDSA</b>	Multipurposed drill bits <b>RT-UNI</b>
			

## SERVICES AND TRAININGS



 online product card

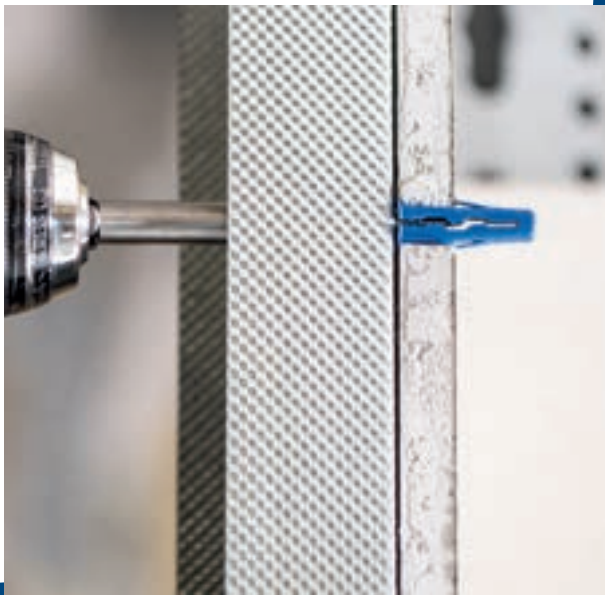
**Services** that makes your job easier

| [Technical Helpdesk](#) | [Point-of-Sales Support](#) |

**Training** portfolio for your professional development

| [e-Learning](#) | [Webinar](#) | [Rawlplug Academy Training](#) | [Step by step](#) | [Tests](#) |







# RAWLDRIVE-D

NYLON SELF-DRILLING ANCHOR  
FOR SINGLE & DOUBLE DRYWALL

Quick & easy anchor for drywall

## FEATURES AND BENEFITS

Flange tiles the wall to prevent going through the drywall

Fast and secure installation

Anchor can be removed and used in different place

Anchor does not bulge the drywall when tiling

Fastening with protection against twisting and damage to the drywall

Installation in single and double drywall

Fixing in aerated concrete (max 2,5mpa)

This same bit type (PZ2) to install anchor and screws

## APPLICATIONS

Sockets, light switches and other electrical fittings

Shelves and bathroom accessories on standard plasterboard

Installation of ceiling fixtures, such as light fittings

Light shelving, brackets and hooks

Pictures

Wood battens

## BASE MATERIALS



Plasterboard



Gypsum fibre

## OFFER



Rawlplug code	Anchor Size	Screw Size	Quantity	
	inch	inch	Box pcs	Case pcs
R-X0-DRA01D+7-1	1/2"	7x1-1/2"	100	800



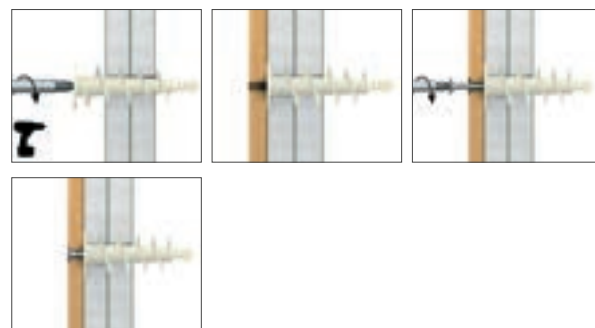
Rawlplug code	Quantity in pack	Anchor Size	Screw Size	Quantity	
		inch	inch	Inner Pack pcs	Case pcs
R-S0-DRA-01D+7-1	6	1/2"	#7x1-1/2"	8	96
R-S0-DRA-01D+7-2	20	1/2"	#7x1-1/2"	4	48



## INSTALATION



PZ2





# RAWLDRIVE-M

METAL SELF-DRILLING ANCHOR FOR SINGLE DRYWALL

A self-drilling light-duty metal fixing for use in plasterboard sheets

## FEATURES AND BENEFITS

Recommended for fire resistant application

Flange prevents accidental push through in plasterboard

Can be used in single and double thickness plasterboard

Short length ideally suited for dry lined walls

No drill required - simply pierce paper skin and screw home

Ideal for use with either a power or manual Pozidriv screwdriver

Must only be used with screws provided



## APPLICATIONS

Fixing electrical boxes, sanitary ware, cable trunking, etc.

Shelves and bathroom accessories on standard plasterboard

Ideal for installation of sockets, light switches and other electrical fittings

Fixing light shelving, brackets and hooks

Timber or metal battens

Pictures

## BASE MATERIALS



Plasterboard



Gypsum fibreboards



Chipboard

## OFFER



Rawlplug code	Quantity in pack	Anchor	Screw	Quantity	
		Size	Size	Inner Pack	Case
		inch	inch	pcs	pcs
R-S0-DRA-02+8-1	6	1/2"	#8x1-3/8	8	64
R-S0-DRA-02+8-2	25	1/2"	#8x1-3/9	4	48

## INSTALATION



PZ2



# RAWLTOGGLE original since 1934

Rawltoggle for use in plasterboard and wood

## FEATURES AND BENEFITS



The long threaded rod of the toggle fixings allows for use with different board thickness and thick attachments, offers maximum flexibility

The wide transition beams ensure a good load distribution. This achieves a high load-bearing capacity

Allows easy installation for fastenings behind thick panels in very flat cavities

Self-acting anchor with easy installation

Suitable for overhead applications



## APPLICATIONS

Light shelving

Brackets, grips and hooks

Paintings

Lamps

Lighting

Mirrors

Other decorative elements

## BASE MATERIALS



Plasterboard



Chipboard

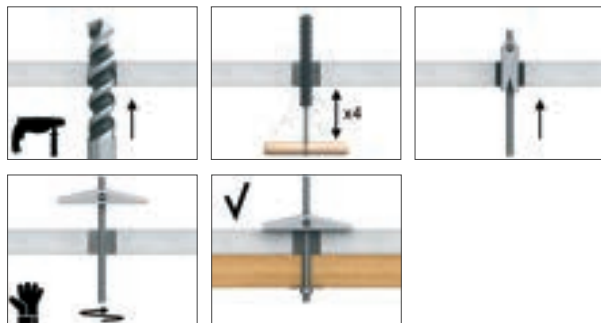


Oriented Strand Board



Plastic

## INSTALLATION



## OFFER



Rawlplug code	Drill	Anchor	Screw	Quantity	
	Size	Diameter	Length	Box	Case
	inch	inch	inch	pcs	pcs
R-X0-SPO-05050	9/16"	9/16"	3/16x2	100	800
R-X0-SPO-05080	9/16"	9/16"	3/16x3 1/4	100	600
R-X0-SPO-06060	11/16"	11/16"	1/4x2 3/8	100	400
R-X0-SPO-06080	11/16"	11/16"	1/4x3 1/4	50	400



Rawlplug code	Quantity in pack	Drill	Anchor	Screw	Quantity	
		Size	Diameter	Length	Inner Pack	Case
		inch	inch	inch	pcs	pcs
R-S0-SPO5050/20	20	9/16"	9/16"	3/16x2	3	18
R-S0-SPO5050/6	6	9/16"	9/16"	3/16x2	8	96
R-S0-SPO5080/6	6	9/16"	9/16"	3/16x3 1/4	8	96
R-S0-SPO6080/20	20	11/16"	11/16"	1/4x3 1/4	3	18



# RAWANCHOR WALL ANCHOR

Excellent anchor for hollow walls

## FEATURES AND BENEFITS



Due to extensive range the Rawlanchor is suitable for board building materials with a thickness 1/16" - 1-1/2", it allows for a number of different applications

The fixing can be installed using normal screwdriver, or installation pliers

One piece stamping, with integral thread and flange for increased reliability

Hinged legs designed to maximise load-bearing capacity in single or double thickness plasterboard

Large contact area of expanded arms increases load-bearing capacity and security

Integral anti-rotation lugs

Fixtures can be removed and re-fitted

Combination head screw supplied

## APPLICATIONS

Shelves and bathroom accessories on standard plasterboard

Radiators and kitchen cabinets on double thickness and tiled plasterboard

Pictures and mirrors

Lamps

Towel rails and curtain rails

## OFFER



Rawlplug code	Anchor		Quantity	
	Drill size	Size	Box	Case
	inch	inch	pcs	pcs
R-X0-SM-04020	5/16"	5/32"	100	1600
R-X0-SM-04032	5/16"	5/32"	100	1600
R-X0-SM-04038	5/16"	5/32"	100	800
R-X0-SM-04059	5/16"	5/32"	100	800
R-X0-SM-05037	7/16"	3/16"	100	800
R-X0-SM-05052	7/16"	3/16"	100	800
R-X0-SM-05065	7/16"	3/16"	100	600
R-X0-SM-06037	1/2"	1/4"	100	600
R-X0-SM-06052	1/2"	1/4"	100	600
R-X0-SM-06065	1/2"	1/4"	50	300
R-X0-SM-06080	1/2"	1/4"	50	300
R-X0-SM-08080	5/8"	5/16"	50	300



## BASE MATERIALS



Plasterboard



Chipboard



Oriented Strand Board

## INSTALLATION



Rawlplug code	Quantity in pack	Drill	Anchor	Quantity	
		Size	Size	Inner Pack	Case
		inch	inch	pcs	pcs
R-S0-SM04020/6	6	5/16"	5/32"	8	64
R-S0-SM04038/6	6	5/16"	5/32"	6	48
R-S0-SM04038/20	20	5/16"	5/32"	8	96
R-S0-SM05037/6	6	7/16"	3/16"	8	64
R-S0-SM05037/20	20	7/16"	3/16"	8	96
R-S0-SM05052/20	20	7/16"	3/16"	8	96
R-S0-SM06037/20	20	1/2"	1/4"	4	48
R-S0-SM06052/20	20	1/2"	1/4"	3	18

# TAP-IT

## HAMMER-IN ANCHOR FOR PLASTERBOARD

Metal anchor for easy installation in plasterboard

### FEATURES AND BENEFITS



Steel fixing for medium and heavy weights

Simple installation due to introductory thread

Corrugated tip simplifies installation without previous drilling

Expanding construction of the fixing prevents spinning in the substrate during installation

Flat head enables leveling fixing with the surface of the substrate

Simple removal without harming the substrate



### APPLICATIONS

Sanitary appliances

Wardrobes

Curtain rods support

Shelves support

Heaters

Convactor heaters

Kitchen appliances

### BASE MATERIALS



Plasterboard

### OFFER



Rawlplug code	Anchor	Screw	Quantity	
	Diameter	Length	Box	Case
	inch	inch	pcs	pcs
R-X0-GPB-1	3/8"	-	100	1600
R-X0-GPB+7-1	3/8"	#7x1 1/2	100	1600



Rawlplug code	Quantity in pack	Anchor	Screw	Quantity	
		Diameter	Length	Inner Pack	Case
		inch	inch	pcs	pcs
R-S0-GPB/12	12	3/8"	#7x1 1/2	12	144
R-S0-GPB/25	25	3/8"	#7x1 1/2	6	72

### INSTALATION





Power**TOOLS** <  
A C C E S O I R E S



[www.rawlplug.com](http://www.rawlplug.com)

# RTA-SDSA

DRILL BITS  
AGGRESSOR SDS PLUS

Drill bits SDS plus for fast drilling in concrete

## FEATURES AND BENEFITS

Centring point for quick commencement of drilling without the drill slipping

160° angle tip allows for quick drilling in concrete

Very deep seating of carbide plate significantly improves connection with the drill core, which affects quality

Aggressive grooves allow fast extraction of material and increase the drilling speed

Steel with specification 34CrNiMo6 provides high strength and durability

Heat treated, which increases the hardness of the steel to 52 HRC for optimal resistance during operation

Extremely high quality, cylindricity and axial alignment of drilled holes, confirmed by international Sicher Safe certificate

## APPLICATIONS

Drilling holes in concrete, brick and stone

Suitable for operation with SDS plus hammer drill

## BASE MATERIALS



For use in:  
Concrete



Solid Brick



Hollow Brick



Natural  
stone

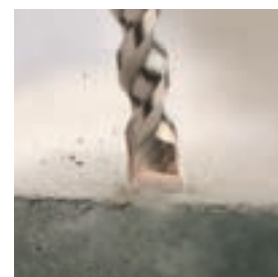


Aerated  
Concrete Block

## OFFER



Rawlplug code	Drill diameter	Length	Working length	Quantity	Product weight
	inch	inch	inch	pcs	lbs
RTA-SDSA-3/16x4	3/16"	3 1/2"	2"	1	0.09
RTA-SDSA-1/4x4	1/4"	4"	2"	1	0.09
RTA-SDSA-5/16x4	5/16"	4 1/2"	2"	1	0.09
RTA-SDSA-3/8x6	3/8"	4 1/2"	4"	1	0.17





## RT0-BIT SCREWDRIVER BITS

Screwdriver bits with precision milled head



### FEATURES AND BENEFITS

Precision milled head tip allows for precise fitting into the screw socket

Special steel S2

Specially heat treated in the hardening process to increase the hardness of the tip to 60 HRC

The special shape of the tip increases its resistance to twisting under the so-called torsion effect

Anti-corrosion coating, blue colour, prevents rust

### APPLICATIONS

Screwdriving of T type screws for wood, metal and concrete

Screwdriving of Phillips screws for wood and drywall

Screwdriving of Pozidriv screws, a wide range of applications in wood and light mountings

### OFFER

Rawplug code	Size	Length	Quantity in blister	Quantity	Product weight
		inch	pcs	pcs	lbs
RT0-BIT-PZ2X3	PZ2	1"	3	1	0.07



## RT0-BIT-SET1 BITS SET

High quality bits set



### FEATURES AND BENEFITS

Special steel S2 affects the life of the product

Specially heat treated in the hardening process to increase the hardness of the tip to 60 HRC

Precision milled head tip allows for precise fitting into the screw socket

The special shape of the tip increases its resistance to twisting under the so-called torsion effect

Anti-corrosion coating, blue colour, prevents rust

High-quality grip for 1/4" bits with a powerful internal magnet

A dedicated grip 1/4" enables the use of a manual screwdriver

### APPLICATIONS

A set of the most popular types and sizes of bits for screwdriving and fastening applications

### OFFER

Rawplug code	Length	Quantity	Size	Product weight
	inch	pcs		lbs
RT-BIT-SET1	1"	1	PH1, PH2, PH3, PZ1, PZ2, PZ3, T20, T30, H4, ADAPTER 2.20"	0.26



Coming **SOON**   
NEW PRODUCTS

[www.rawlplug.com](http://www.rawlplug.com)



# RT-UNI

MULTIPURPOSE  
DRILL BITS

Only one drill bit for all substrates

Coming **SOON**  
NEW PRODUCTS

## FEATURES AND BENEFITS

Positive sharpening 118° with centring point of the tip allows to drill clean holes in various type of substrates

Very deep seating of carbide plate significantly improves connection with the drill core, which affects quality

Fast dust extraction in concrete thanks to L shaped flute

Heat treated, which increases the hardness of the steel to 52 HRC for optimal resistance during operation

## APPLICATIONS

Drilling holes in concrete, brick, ceramic, steel, timber and plastic

## BASE MATERIALS



Concrete



Solid Brick



Ceramic



Steel



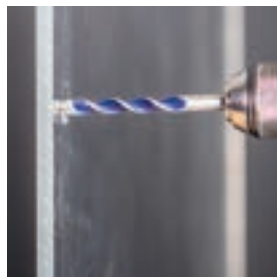
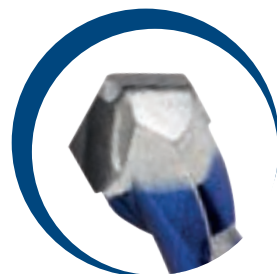
Timber



Plastic



Glaze



## OFFER

Rawplug code	Drill diameter	Length	Quantity
	inch	inch	pcs
RTA-UNI-1/4x4	1/4"	4"	1
RTA-UNI-3/16x3-1/2	3/16"	3 1/2"	1
RTA-UNI-3/8x4-1/2	3/8"	4 1/2"	1
RTA-UNI-5/16x4-1/2	5/16"	4 1/2"	1





# 4ALL

UNIVERSAL NYLON  
ANCHOR WITH SCREW

High performance nylon anchor with screw for all types of substrates

## FEATURES AND BENEFITS



Unique internal design provides positive grip for screws

Rib detail at anchor head provides added grip

Expanding section designed to collapse in hollow materials and provide positive grip behind surfaces

Unique 4 way expansion combined with dedicated material allows application in any type of substrate

Solid head design provides strength whilst anchor is installed

Anti-rotational lugs promote grip in wide range of substrates including soft masonry materials

## APPLICATIONS

Lighting

Wall cabinets

Wardrobes

Letterboxes

TV brackets

Bathroom fittings

Electrical fittings

Shelves

## BASE MATERIALS



Concrete



Solid brick



Solid Sand-lime brick



Vertically-perforated clay block



Hollow Sand-lime Brick



Aerated concrete

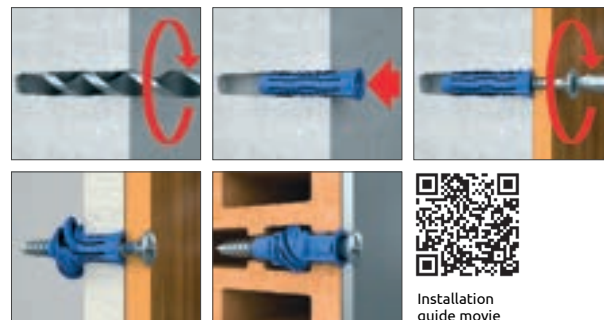


Plasterboard

Coming **SOON**  
NEW PRODUCTS



## INSTALATION



Installation  
guide movie



# R-FFS

FRAME FIXING  
WITH COLLAR HEX HEAD

Universal frame fixing for many applications

Coming **SOON**  
NEW PRODUCTS

## FEATURES AND BENEFITS



The optimal expansion zone guarantees high load capacities with a small anchoring depth

Minimized installation time - only 40 mm in concrete

High bending strength due to the use of a minimum 6.8 steel grade

Quick assembly due to shallow drilling and the possibility of using the mallet in aerated concrete substrate

Framefixing with a collar hex head for fixing ventilated façades and window frames

The special polyamide formula give the highest parameters in all categories of substrates according to ETAG 020 (A, B, C, D)



## APPLICATIONS

Ventilated façades

Window and door frames

Balustrades and handrails

Garage Doors

Wooden constructions

Satellite dishes

Shelves

## BASE MATERIALS



Concrete



Cracked concrete



Solid brick



Solid Sand-lime brick



Hollow Brick



Hollow Sand-lime Brick



Hollow Lightweight Concrete Block



Aerated concrete

## INSTALLATION





# R-FF1

NYLON  
FRAME FIXING

Universal frame fixing for many applications

Coming **SOON**  
NEW PRODUCTS

## FEATURES AND BENEFITS



The stainless steel screw for best anti-corrosion protection and external applications

The countersunk plug for flush fixing of soft material (eg. timber)

Specially-formulated nylon allows best performance installation for use in all base material categories according to ETAG 020 (A, B, C, D)

Internal plug geometry designed to fit the screw head

Plug design ensures multi-axis expansion

High performance 8.8 steel class  
- version with "H" on the head marking  
Special installation tool to increase a performance in aerated concrete  
Ultimate Zinc Flake corrosion resistance makes possible installation in C4 corrosion environment

## APPLICATIONS

Door and window frames

Garage doors and industrial doors

Gates

Façade (substructures made of wood and metal)

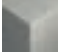


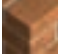

Wall cabinets, shelves

Satellite dishes

Handrails

Cable trays

## BASE MATERIALS

	Concrete		Hollow Brick
	Cracked concrete		Hollow Sand-lime Brick
	Solid brick		Hollow Lightweight Concrete Block
	Solid Sand-lime brick		Aerated concrete



## INSTALLATION



Installation  
guide movie



# D-TAP-IT

## METAL ANCHOR FOR EASY INSTALLATION IN PLASTERBOARD

Metal anchor for easy instalation in plasterboard

Coming **SOON**  
NEW PRODUCTS

### FEATURES AND BENEFITS



Installation of two plasterboards

Fixing in double/single plasterboard

Corrugated tip simplifies installation  
without previous drilling

Possibility of installation in lightweight  
aerated concrete

Higher loads

### APPLICATIONS

Sanitary appliances

Wardrobes

Curtain rods support

Shelves support

Heaters and convector heaters

Kitchen appliances

### BASE MATERIALS



Plasterboard





# RAWLNUT FLEXI PLUG

Coming **SOON**  
NEW PRODUCTS

Truly most universal anchor on the market - suitable for most of the substrates

## FEATURES AND BENEFITS

Product versatility, i.e. working in concrete, masonry, tiles, steel, plastic, chipboard, plasterboard and much more

Resistant to vibration and corrosion

Ideal for unknown substrates and irregular or oversized holes

Rubber flange sets flush at the surface which guarantee tight fixing

Made from synthetic rubber (EPDM) for more severe corrosion environment

Bonded brass insert



## APPLICATIONS

Pictures

Lighting

Shelves

Trunking

Cable trays

Electrical fittings

Boats

Handrails

## BASE MATERIALS



Concrete



Aerated concrete



Solid brick



Glaze



Hollow Brick



Plasterboard



Vertically-perforated Clay Block



Chipboard



Lightweight Concrete Block



Oriented Strand Board



Hollow Lightweight Concrete Block



PVC Profile



# R-ISO-PLUG INSULATION FIXINGS

For fastening lightweight fixtures on insulated façades

Coming **SOON**  
NEW PRODUCTS

## FEATURES AND BENEFITS ✓

No thermal bridging

Can be installed with commercial drill/  
drive tool

The geometry of the R-ISO-PLUG allows  
for a simple installation in thin layers of  
plaster, without the need for pre-drilling,  
thus saving a stage of installation

Fixtures are fixed with a 4 - 4.5mm screw

## APPLICATIONS ✓

Façade construction (ETICS)

Attachments to insulation

Lightweight recycled panels

Electrical fittings

Refrigeration and climate control

## BASE MATERIALS ✓

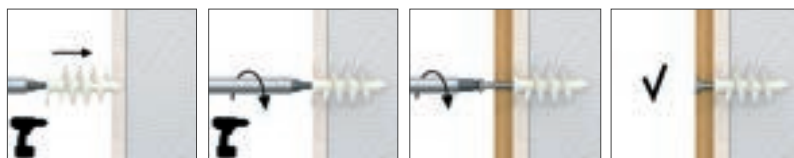


Polystyrene (EPS) boards



Mineral Wool Boards

## INSTALLATION ✓



Installation  
guide movie





COMBOPACK



RAWLBAG



B-PACK PACKAGING



BIOBAG



CLIP



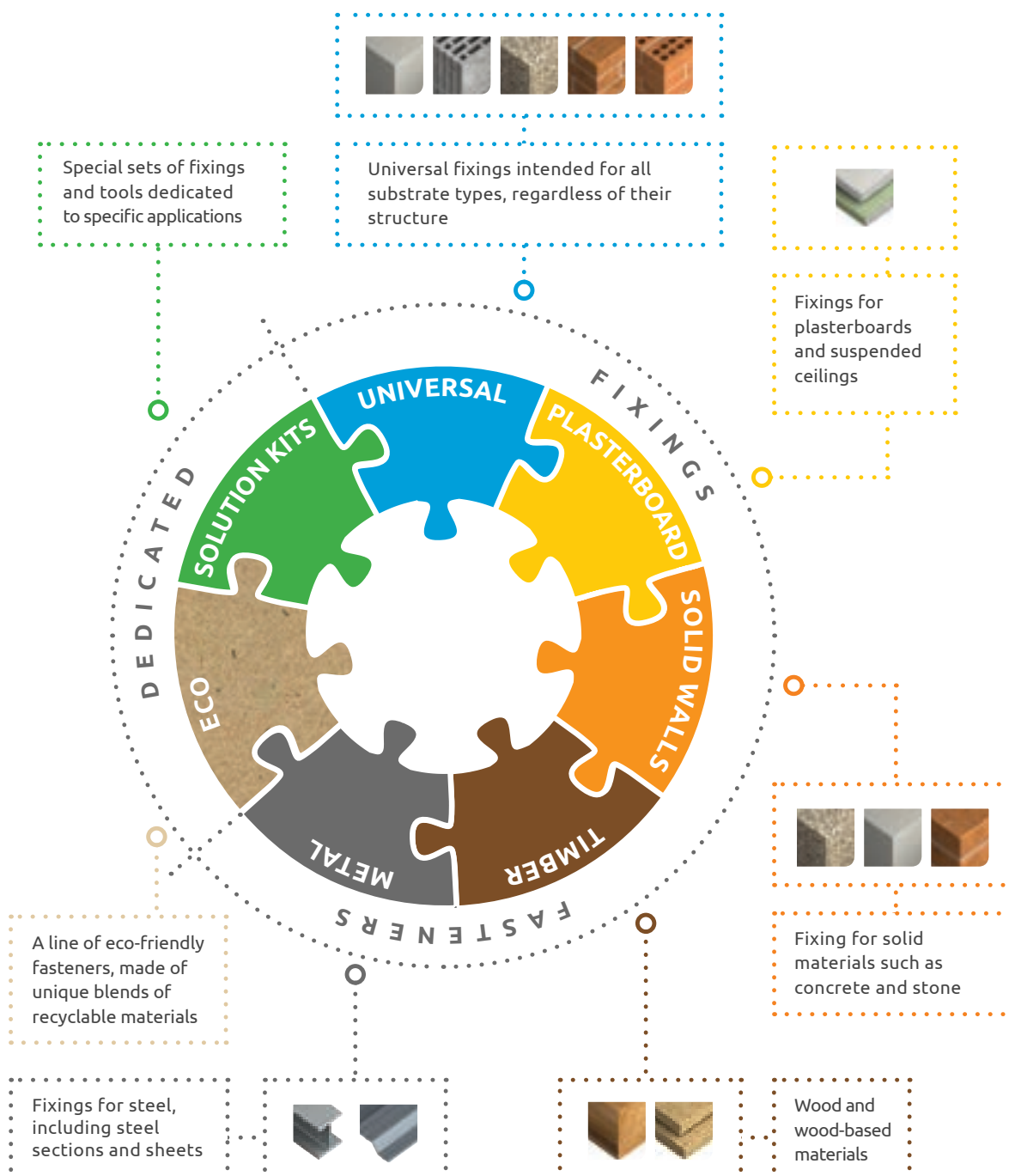
JAR PACKAGING



PACKAGING FOR  
LOOSE PRODUCTS

# RAWLPLUG'S COLOUR CODE

Rawlplug's colour code is an important element of the efficient product display system. Each colour corresponds to a substrate type, making the choice of the right product easier and quicker.





**THE SUCCESS OF RAWLPLUG'S POS SYSTEM STEMS FROM THE WELL KNIT COMBINATION OF NUMEROUS ELEMENTS WHICH CUSTOMERS CONSIDER CRUCIAL, SUCH AS:**

**COLOUR CODE** which translates into the adequate colour patterns of toppers, side panel stickers, wobblers, price strips, and floor stickers

**DISPLAY RACKS WITH ACCESSORIES**

**POS SUPPORT TOOLS**

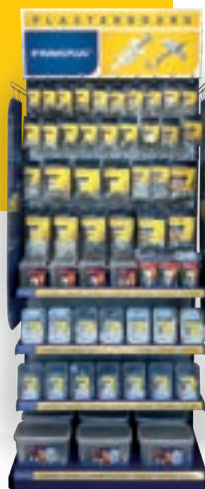
**PACKAGING AND LABELLING SYSTEM**

The only way to build a long-term sales effect and trigger customer satisfaction at the point of sale is to make sure that all components of Rawlplug's POS system are used in a complementary manner.

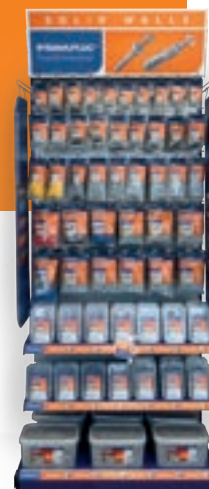
**UNIVERSAL**



**PLASTERBOARD**



**SOLID WALLS**



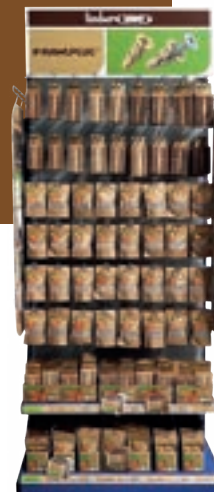
**TIMBER**



**MIX**



**timber-UNO**



## EXPLODED VIEW

### POS COMPONENTS

1. TOP PANEL (TOPPER)

PANEL HOLDER

2. SIDE PANEL

3. OUTER SIDE LABEL

4. INNER SIDE LABEL

SHELF WOBBLER

6. SHELF EDGE STRIP

7. FLOOR STICKER

### STAND COMPONENTS

TOPPER  
FRAME

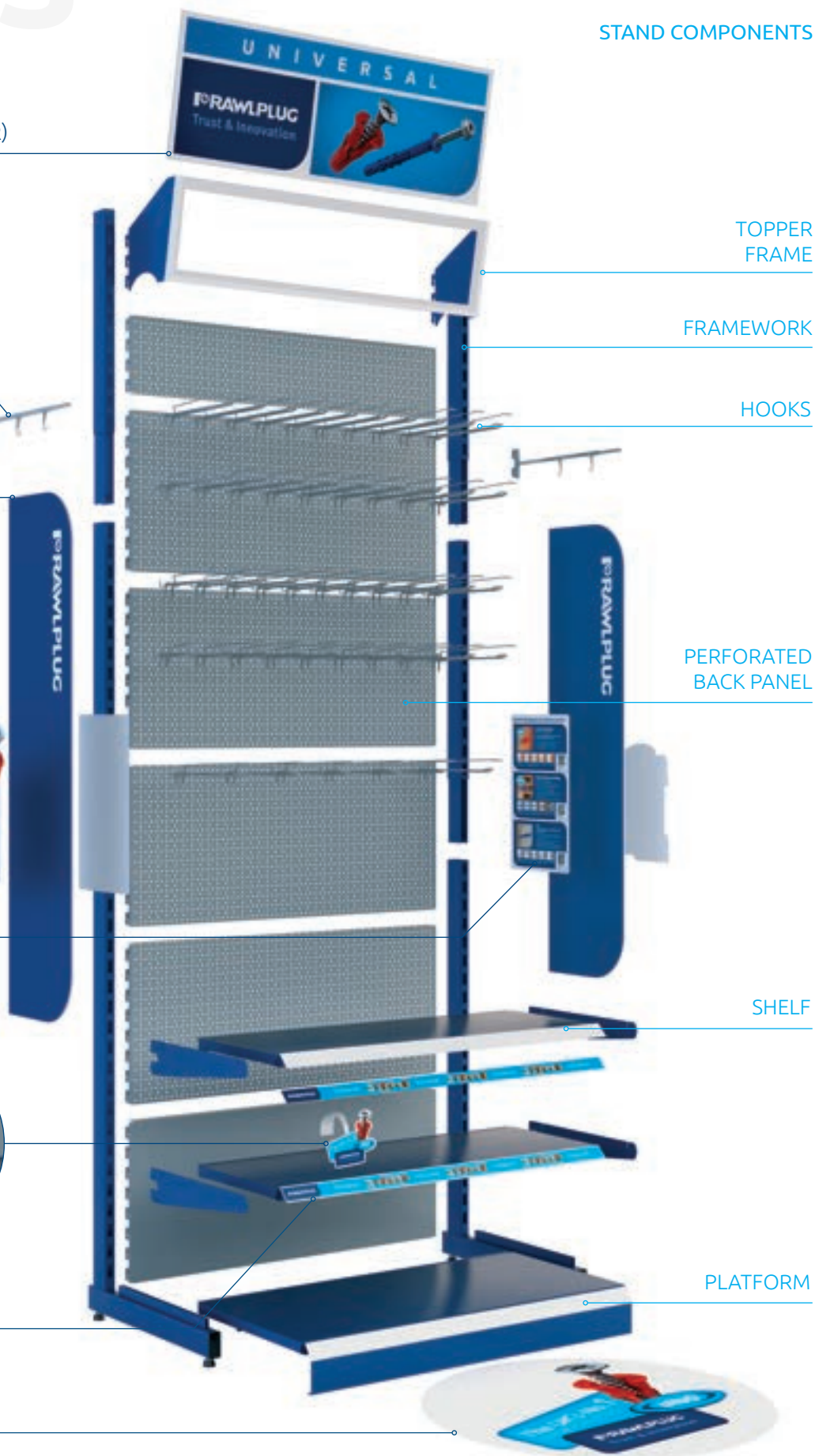
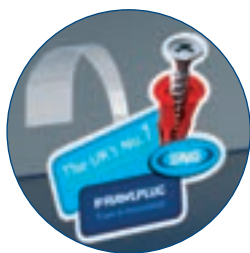
FRAMEWORK

HOOKS

PERFORATED  
BACK PANEL

SHELF

PLATFORM





## POS INFORMATION ELEMENTS

ANY EXPOSITION REQUIRES CHOOSING  
ADDITIONAL ITEMS FROM BELOW:

### 1. TOP PANEL (TOPPER)

defines in a clear and legible way the group of products placed on the shelf. All graphics are done in colors assigned to individual product groups. For display of multiple product groups on a single unit a 3 colour topper is available



### 2. SIDE PANEL

made of rigid material provides space for additional commercial and product information using internal and external Side Labels. Panel artwork is made in the brand colors and may include additional information such as logos or slogans common to entire POS system.



### 3. OUTER SIDE LABEL

contains general product or commercial information relevant for particular stand or group of stands. This space is ideal for communication of promo campaigns or other kind of advertising. Side Labels display additional valuable information important in the process of communication with customers, such as installation instructions or examples of products applications. It also presents relevant commercial information concerning e.g. promotions.



### 4. INNER SIDE LABEL

contains information related to the product presented on the adjacent shelf, i.e. application example, installation guideline, tables or charts presenting technical parameters, etc.



### 5. SHELF WOBBLERS

are used to bring attention to a particular product at the point of purchase, where 80% of buying decisions are made. Rawlplug Wobblers are produced using white rigid PVC for the face (paper card is also available on request) and a clear PVC for the wobbler's arm which comes with a strong self adhesive pad for application. Wobblers are available in several standard designs with complex contour cut shapes and are available in many language versions.



### 6. SHELF EDGE STRIP

maintained in the color of the topper displays in the background it features several icons with images of substrates designed for particular fixing group. Shelf edge strip is used to feature information regarding products prices, barcodes and other tags specified by customers.



### 7. FLOOR STICKER

presents a product characteristic for the group, increases the brand perception and aids guidance to the right product. It can also be used for clear communication of substantial commercial information, e.g. promotions.



## POS DEDICATED TO RAWLPLUG USA

### TOP PANEL (TOPPER)

UNO + FF1 ..... MP-S0-TBB-02



UNO + 4ALL ..... MP-S1-TBB-03



DRILL BITS & ACCESSORIES 1 ..... MP-S1-TBB-05



### SHELF WOBBLERS

UNO  
MP-S0-WUNO-01



RAWLDRIVE  
MP-S0-WDRA-01



RAWLANCHOR  
MP-S0-WSM-01



RT-IBITT20  
MP-S0-WRTIBITT20



### OUTER SIDE LABEL

UNO  
MP-S0-ND-01



RAWLDRIVE  
MP-S0-NDDRA-01



RAWLTOGGLE  
MP-S0-ND-12



RAWLANCHOR  
MP-S0-ND-02



### SHELF EDGE STRIP

UNIVERSAL ..... MP-S1-CBB-01

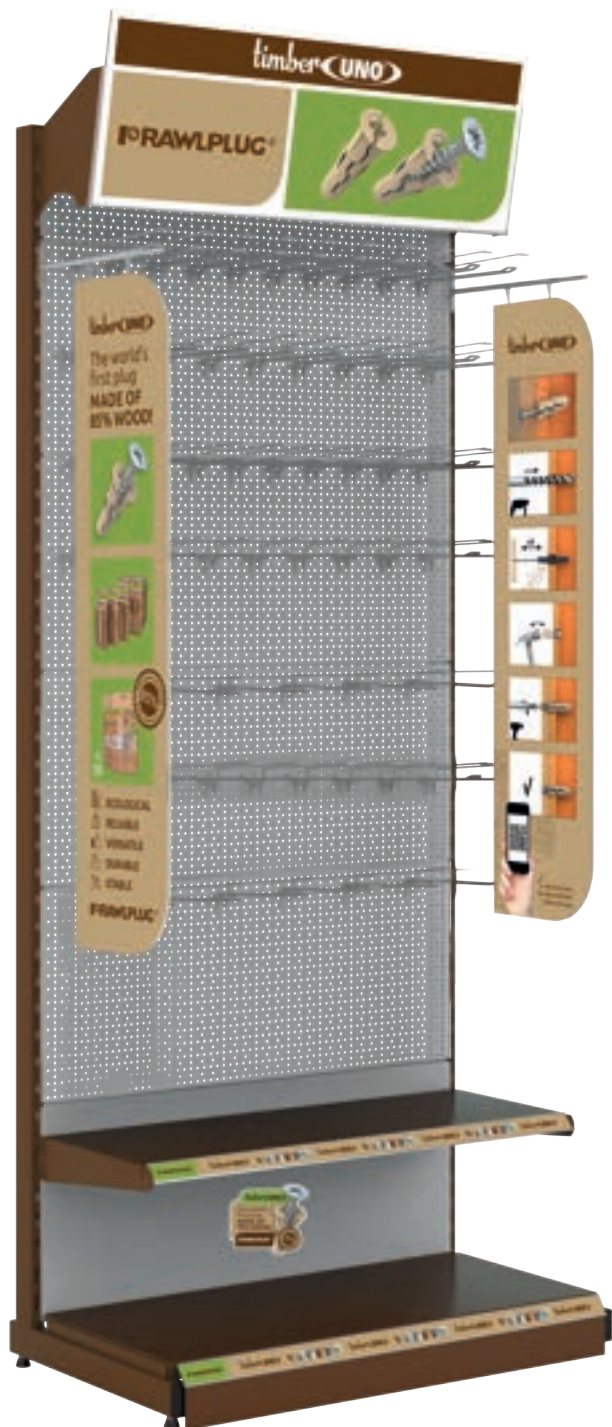


PLASTERBOARD ..... MP-S1-CBR-01





## DEDICATED SET OF POS FOR TIMBER UNO



### MP-S1-SET-UNOTB INCLUDES:

- TOPPER TIMBER UNO
- SIDE PANNELS TIMBER UNO
- WOBBLER 1X
- SHELF EDGE STRIP LARGE 4X

### TOPPER



### SIDE LABEL

UNO | MP-S0-T-01



### WOBBLER TIMBER UNO 70%



### SHELF EDGE STRIP



# SHOP-IN-SHOP



**1 RS-TOT-TRIANGLE**  
TRIANGLE POS set



**2 RS-TOT-SQUARE**  
SQAURE POS set



**3 RS-STAR-SET**  
STAR POS set



**4 RS-CORNER-SET**  
CORNER POS set



**5 RS-U-SET**  
"U" POS set



**6 RS-KEY-SET**  
KEY POS set



Power tools



Power tool accessories



Direct and manual fastening systems



Fasteners



Bonded anchors



Mechanical anchors



Lightweight fixings



Facade insulation fixings

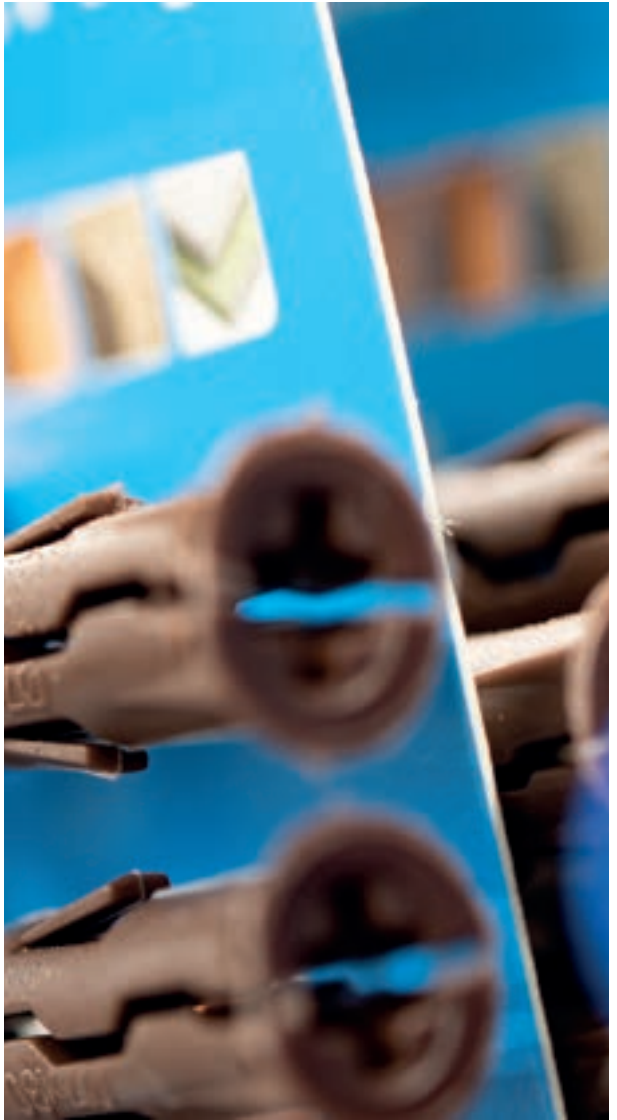


Roofing insulation fixings



Foams, sealants & adhesives









#### AUSTRALIA

**Rawlplug Australia**  
255 Whitehorse Road  
Suite 7, Level 1  
Balwyn, Vic 3103  
Tel: + 61 428 647 745  
Email: craig.salmon@rawlplug.com  
Web: www.rawlplug.com

#### GERMANY

**Koelner Deutschland GmbH**  
Gmünder Str. 65  
73614 Schorndorf  
Tel: +49 (0) 7181 977 72-0  
Email: info@koelner-befestigung.de  
Web: www.rawlplug.com

#### ITALY

**Rawlplug Italy S.r.l.**  
Via Privata Euro Industrie n. 4/6  
20052 - Vignate (MI)  
Tel: +39 02 50309590  
Email: informazioni@rawlplug.com  
Web: www.rawlplug.it

#### RUSSIA

**Koelner Trading KLD LLC**  
ul. Dzerzhinskogo 219  
236034 Kaliningrad  
Tel: + 7 (4012) 65 85 75  
Email: info@koelner-trading.ru  
Web: www.koelner-trading.ru

#### SWEDEN

**Rawl Scandinavia AB**  
Baumansgatan 4  
593 32 Västervik  
Tel: +46(0)490 30660  
Email: info@rawlplug.se  
Web: www.rawlplug.se

#### UNITED ARAB EMIRATES

**Rawlplug Middle East FZE**  
P.O. Box 261024 Dubai, UAE  
Warehouse No. RA08BC01  
Tel: + 971 (4) 8839 501  
Email: dubai@rawlplug.co.uk  
Web: www.rawl.ae

#### CHINA

**Rawlplug Shanghai Trading Co., Ltd.**  
Room B209, No. 139 Fanghua Road,  
Pudong, Shanghai  
P.R. China Post code 201204  
Tel: +86 189 1882 8527  
Email: Jennifer.Song@rawlplug.com  
Web: www.rawlplug.com

#### HUNGARY

**Koelner Hungária Kft**  
Jedlik Ányos út. 34  
2330 Dunaharaszti  
Tel: + 36 (24) 520 400  
Email: info@koelner.hu  
Web: www.koelner.hu

#### LITHUANIA

**UAB Koelner Vilnius**  
Žarijų g. 2  
LT-02300, Vilnius  
Tel: + 370 (5) 2324 862  
Email: koelner@koelner.lt  
Web: www.koelner.lt

#### SINGAPORE

**Rawlplug Singapore Pte. Ltd.**  
Blk 302, #04-11, 25B Loyang Crescent  
Loyang Offshore Supply Base  
Singapore 506817  
Tel: + 65 9078 5220  
Email: jacek.nowicki@rawlplug.com.sg  
Web: www.rawlplug.com

#### THAILAND

**Rawlplug Manufacturing (Thailand) Limited**  
Address: 888/43 Moo 9  
T.Bangpla, A.Bangplee  
Samutprakarn 10540  
Thailand  
Tel: +662 731 4788  
Web: www.rawlplug.com

#### UNITED KINGDOM

**Rawlplug Ltd**  
Skibo Drive  
Thornliebank Industrial Estate  
Glasgow G46 8JR  
Tel: + 44 (0) 141 638 7961  
Fax: + 44 (0) 141 638 7397  
Email: rawlinfo@rawlplug.co.uk  
Web: www.rawlplug.co.uk

#### CZECH REPUBLIC

**Koelner CZ s.r.o**  
Palackého 1154/76A  
702 00 Ostrava-Přívov  
Tel: + 420 596 636 A 397  
Email: objednavky@rawlplug.cz  
Web: www.koelner.cz  
Web: www.rawlplug.cz

#### INDIA

**Rawlplug Products and Services India Private Limited**  
Head Office: +91 08 4302 2234  
#29, Prestige Meridian - L503, M.G.Road,  
Bangalore - 560001, Karnataka, India  
Tel: 91 - 7356209642  
Email: india@rawlplug.com  
Web: rawlplug.com

#### POLAND

**Rawlplug S.A.**  
ul. Kwidzyńska 6  
51-416 Wrocław  
Tel: +48 (71) 32 60 100  
Fax: +48 (71) 37 26 111  
Email: info@rawlplug.com  
Web: www.rawlplug.com

#### SLOVAKIA

**Koelner Slovakia, s.r.o.**  
Jánošíkova 1  
010 01 Žilina  
Tel: + 421 415 003 900  
Email: objednavky@rawlplug.sk  
Web: www.koelner.sk  
Web: www.rawlplug.sk

#### TURKEY

**Rawlplug Turkey Insaat Malzemeleri LTD. STI.**  
FSM mah. Poligon cad. Buyaka 2  
sitesi 3 blok NO8C/1  
Umraniye /I stanbul  
Tel: +905 449 300 261  
Web: www.rawlplug.com

#### VIETNAM

**Factory A\_18\_4\_B, C, D, E, Lot A\_18\_CN**  
Bau Bang Industrial Park, Lai Uyen Town  
Bau Bang District,  
Binh Duong Province  
Vietnam, 75700  
Email: info@rawlplug.com

#### UNITED STATES OF AMERICA

**Rawlplug Inc.**  
227 West Monroe Street  
Suite 3600  
Chicago, Illinois 60606  
Tel.: +1 312 940 5102  
Web: www.rawlplug.us

#### FRANCE

**RAWLPLUG France**  
Bâtiment DC6, ZAC de la Feuchère  
16, rue Jean Mermoz  
77290 Compans  
Tel: + 33 (0) 1 6021 5020  
Email: rawl@rawlplug.com  
Web: www.rawlplug.fr

#### IRELAND

**Rawlplug Ireland Ltd**  
Unit 10 Donore Business Park  
Donore Road Drogheda  
Co Louth A92 C522  
Tel: + 353 (0) 41 9844 338  
Email: sales@rawlplug.ie  
Web: www.rawlplug.ie

#### PORTUGAL

**Rawlplug Lda**  
Business Park Maia  
Rua Eng Frederico Ulrich 3110, B1  
4470-605 Maia, Portugal  
Email: pt.clientes@rawlplug.com  
Tel: +351 221 174 633  
Web: www.rawlplug.pt

#### SPAIN

**Rawlplug Lda**  
Business Park Maia  
Rua Eng Frederico Ulrich 3110, B1  
4470-605 Maia, Portugal  
Email: es.clientes@rawlplug.com  
Tel: +34 653 782 215  
Web: www.rawlplug.es

#### UKRAINE

**Koelner Ukraine LLC**  
Lvivska Bichna, 6  
Sokilnyky  
Pustomytsy Dstr., Lviv Reg. 81130  
Tel.: + 380 (32) 2440 744  
Email: koelner@koelner.ua  
Web: www.koelner.ua